

HUACI EASYFIT BLUETOOTH LOCKSET

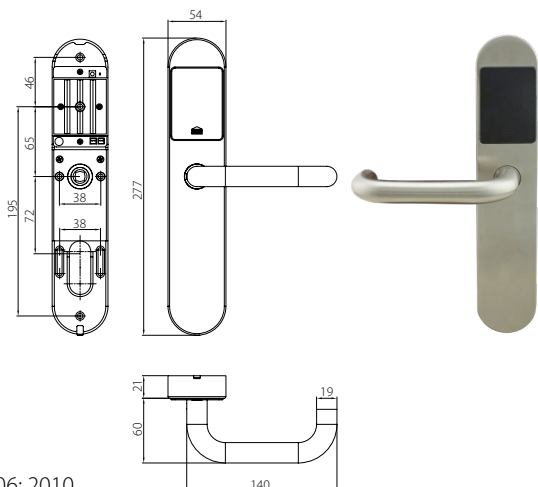


APPLICATION

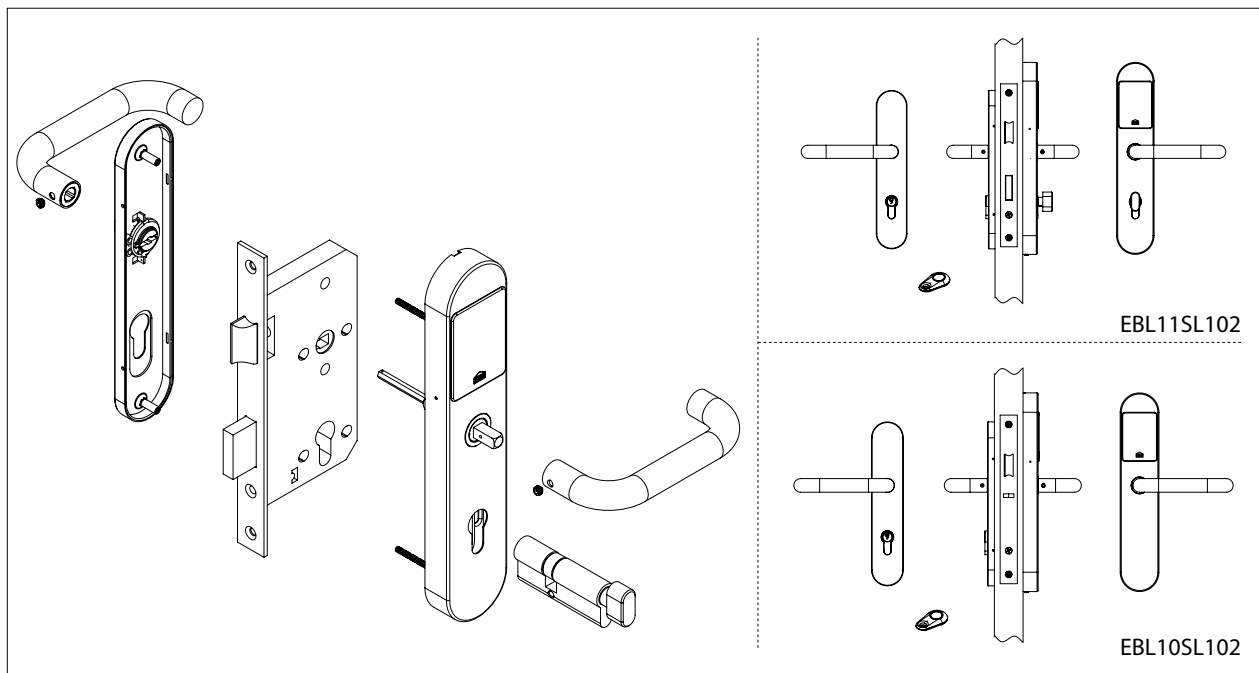
HUACI EasyFit Bluetooth Handle Set is a standalone door access control system that is suitable for most of the commercial / residential application that requires an easy-to-fit access control solution.

HANDLE SPECIFICATIONS AND FEATURES

- Handle Material: Stainless Steel AISI304
- Standalone electromechanical handle set
- Remote control access through Bluetooth remote
- Access control unit built into the interior handle
- Easy installation with no wiring required
- Access control unit fitted in the inside of the door to prevent tampering
- Built in "Passage Mode" to be activated by remote
- Fitted with standard mechanical euro mortice lock
- Mechanical exterior handle with lever options
- Non handed installation
- Concealed fixing
- Various fixing holes on the plate for retro fit purpose
- Mechanical override by standard euro cylinder
- No visual access control interface required
- Add up to 16 remotes
- Suitable for door thickness 35 – 60mm
- Standard Finish: Satin Stainless Steel, other finishes available upon request
- Successfully type-tested for conformity to all of the requirements of EN1906: 2010



HANDLE SET OPTIONS

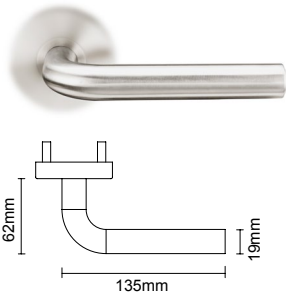
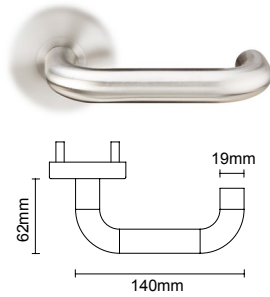
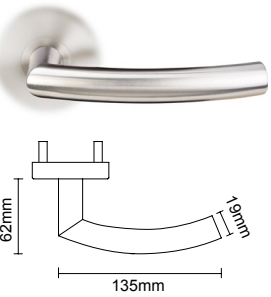
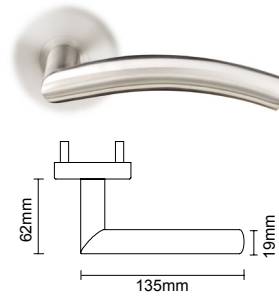
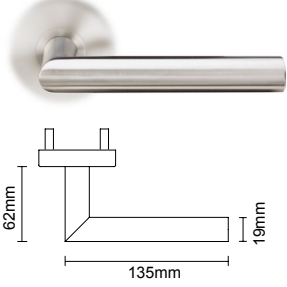
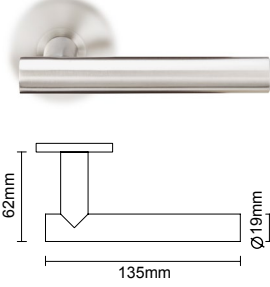
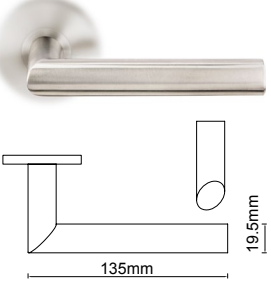
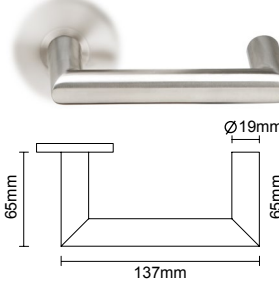
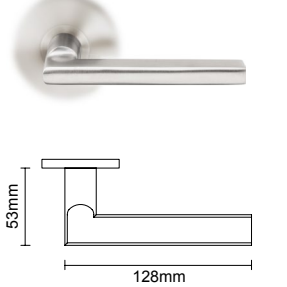
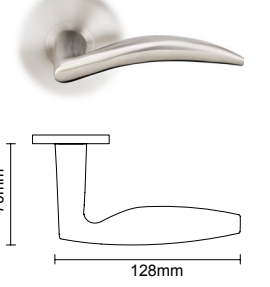
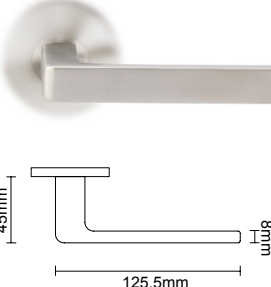
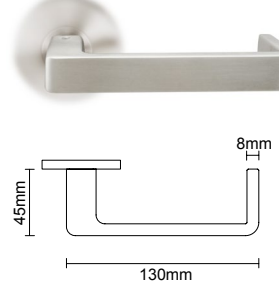


PASSAGE MODE

HUACI EasyFit Lockset can be set as a passage function for control free access to the fitted door.

- To activate "Passage Model": Press and hold the remote button for 3 seconds and you will hear three beeps sound indicating "Passage Mode" is activated. Passage Mode will enable the exterior handle to be operable permanently.
- To deactivate "Passage Model": Press and hold the remote button for 3 seconds and you will hear two beeps sound indicating "Passage Mode" is deactivated and the lockset returns to controlled access mode with outside handle to be disengaged from the lock when not used.

LEVER OPTIONS

<p>SL101</p> 	<p>SL102</p> 	<p>SL103</p> 	<p>SL104</p> 
<p>SL105</p> 	<p>SL106</p> 	<p>SL107</p> 	<p>SL109</p> 
<p>SL243 / SL243H</p> 	<p>SL210</p> 	<p>SL345</p> 	<p>SL346</p> 

MORTICE LOCK OPTIONS

ML107209-60

Function

Anti-thrust Nightlatch

Application

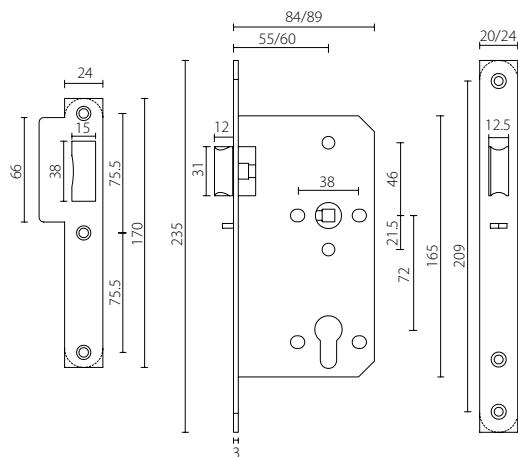
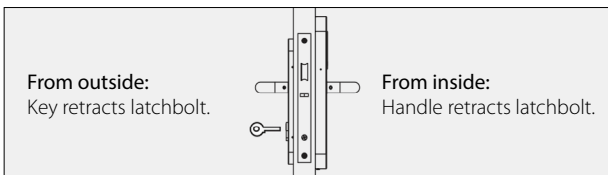
Suitable for doors requiring simple security by blocked latchbolt. Escape option provided by single lever action from inside.

EN12209: 2003 Classification

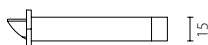
3	X	8	1	0	G	-	B	0	2	0
---	---	---	---	---	---	---	---	---	---	---



Illustration



* Dimensions in mm



ML107201-60

Function

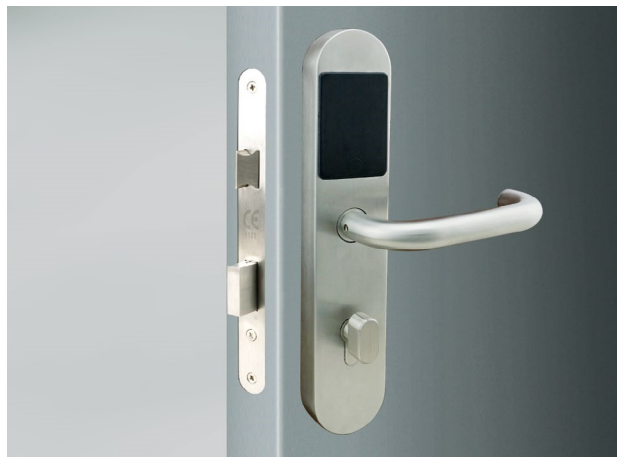
Sashlock/Entry

Application

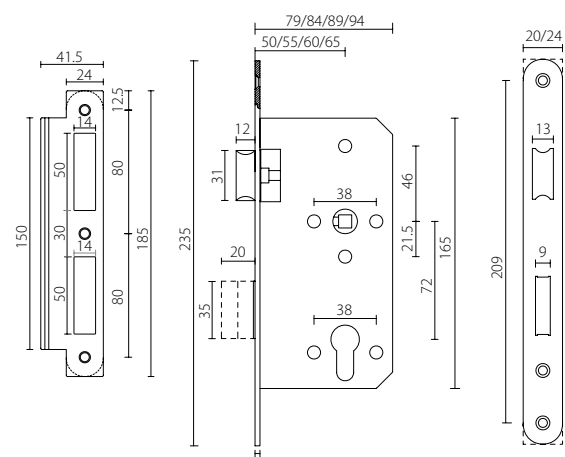
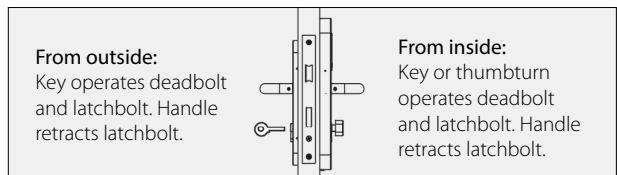
Suitable for latched doors requiring deadbolt locking security.

EN12209:2003 Classification

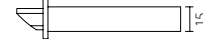
3	X	8	1	0	G	3	B	C	2	0
---	---	---	---	---	---	---	---	---	---	---



Illustration



* Dimensions in mm





MORTICE LOCK SPECIFICATIONS AND FEATURES

- Modular case across functions for rapid door prepping and installation
- 72mm centers, backset in 60mm
- 8mm follower with spindle gripping function
- Reversible latchbolt in solid stainless steel
- Double throw deadbolt in solid stainless steel with 20mm projection
(Not applicable to ML107209-60 Night Latch version)
- Suitable for sprung and most un-sprung lever furniture
- Stainless steel faceplate and strike in square and radius version
(radius version improves door prep efficiency with machine routing)
- Compatible with bolt through furniture and escutcheons of 38mm centers

STANDARDS AND CERTIFICATION



Successfully type-tested for conformity to all of requirement of EN12209: 2003



Successfully passed and exceeded 240-minutes fire test of metal fire door assemblies to EN1634-1: 2014



CE Declaration of Conformity available upon request



Meets the dimensional recommendations of BS8300 and Approved Document "M"



HUACI ML1072 series locks are approved by Certifire.* Certifire No. CF5333



All EN/CE/Certifire tests performed independently and certified by Exova/ Warrington Fire/Warrington APT. Test report/ certificate are available upon request.

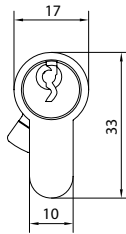
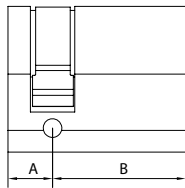
* Certifire is an independent third party certification scheme that assures performance, quality and traceability of fire protection products

CYLINDER OPTIONS

1. For ML107209-60 Mortice Night Latch

Single Profile Cylinder

Application: Keyed operation from one side (outside) only.



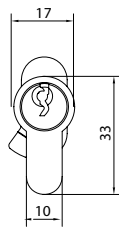
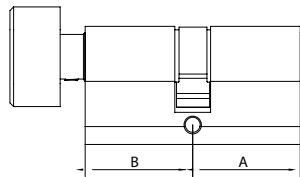
Door Thickness	A	B	Item No.
35-40mm	10mm	30mm	ECS1030
41-45mm	10mm	33mm	ECS1033
46-50mm	10mm	35mm	ECS1035
51-55mm	10mm	38mm	ECS1038
56-60mm	10mm	40mm	ECS1040

* Dimensions in mm

2. For ML107201-60 Mortice Sashlock

Double Profile Cylinder with Thumb-turn

Application: Keyed operation from one side (outside) and thumb-turn operated from the other side (inside).



Door Thickness	A	B	Item No.
35-40mm	30mm	41mm	ECS3041TK
41-45mm	33mm	44mm	ECS3344TK
46-50mm	35mm	46mm	ECS3546TK
51-55mm	38mm	49mm	ECS3849TK
56-60mm	40mm	51mm	ECS4051TK

* Dimensions in mm

CYLINDER SPECIFICATIONS AND FEATURES

- Standard euro profile dimension according to DIN18252
- Solid brass body and keys (3 keys included)
- 5 pins constructions
- Standard Finish: Satin Nickel Finish (SN)

STANDARDS AND CERTIFICATION



Successfully type-tested for conformity to all of the requirements of EN1303:2005



Successfully passed 240-minutes fire test of metal door assemblies to EN1634-1:2014



All test performed independently and certified by Exova/Warringtonfire/Warrington APT. Test reports and/or certificates are available on request